



AIR ARMS

Users Handbook

THIS HANDBOOK REFERS TO S510 XS HIGH POWER MODELS



Shown with optional sight

PLEASE READ THIS MANUAL BEFORE USING YOUR NEW RIFLE, IT
CONTAINS IMPORTANT SAFETY INFORMATION AND INSTRUCTION ON
ADJUSTMENT AND MAINTENANCE.

Gun Security	1
Serial Number	1
Safety First	2
Contents Of The Box	2
Important Information	2
Operating Instructions	5
Cocking	5
Mounting/Demounting the Magazine & Pellets	6
Demounting	6
Trigger Adjustments	7
Description Of Operation	7
Adjustment	8
Power Adjuster	10
Filling Instructions	11
Maintenance	14
Fixings	14
Barrel	14
Lubrication	15
Removing the Stock	15
Exploded Diagrams	17

AIR ARMS RESERVE THE RIGHT TO ALTER THE CONSTRUCTION, APPEARANCE OR PERFORMANCE OF ANY PRODUCT WITHOUT PRIOR NOTIFICATION. ALL ILLUSTRATIONS ARE FOR INFORMATION PURPOSES ONLY AND DO NOT NECESSARILY SHOW THE EXACT MODEL THAT WAS PURCHASED.

Gun Security

It is important to make sure that your gun is always kept in a safe and secure fashion when not in use.

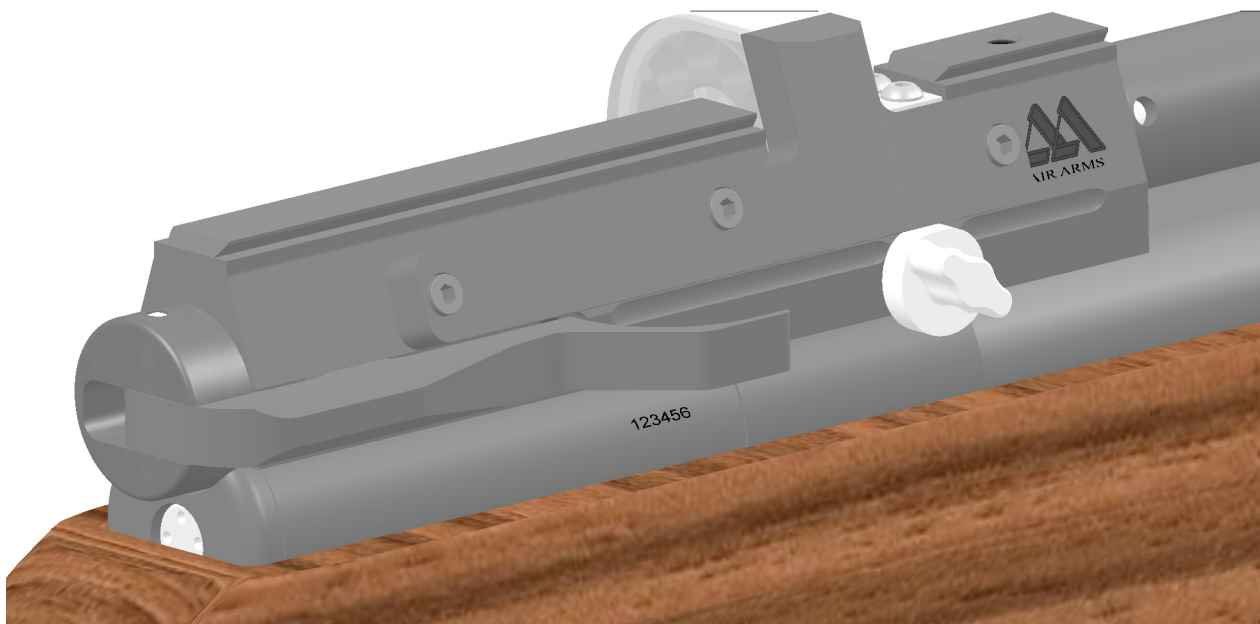
For rifles purchased in the UK and that are NOT FAC rated (high power) a free gun lock and mounting eyes are supplied. Please follow the simple fixing instructions and keep our sport safe.

Note: If there is no gun lock in the box please contact the dealer you purchased the rifle from.



Serial Number

When corresponding with Air Arms please quote the serial number of your rifle.



Safety First

- Always treat your air rifle or pistol as if loaded. Never assume it is clear. CHECK.
- When first picking an air rifle or pistol up, check to make sure it is not cocked or loaded.
- Never leave your rifle or pistol cocked or loaded.
- Never leave a cocked or loaded rifle or pistol unattended.
- Always point your rifle or pistol in a safe direction. Never point the gun at anyone.
- Always know the back drop to your shooting. Make sure you know where your pellets are going.
- Be aware of ricochets.
- Always conduct yourself in a sports-man like manner.

Be aware that your actions will be under the scrutiny of other members of the public who may not share your enthusiasm for air gun shooting. Bad practises promote bad publicity. Do not jeopardise your future enjoyment by misusing this rifle.

Contents Of The Box

- 1 x S510 XS Rifle
- 1 x Manual
- 1 Tool kit containing.
 - 1 x 1.5 mm allen key
 - 1 x 2.5 mm allen key
 - 1 x S475 Filling adaptor

Important Information

WARNING! - UNAUTHORISED DISASSEMBLY OF THIS RIFLE WILL INVALIDATE THE MANUFACTURERS WARRANTY. THIS INCLUDES ANY ANTI-TAMPER DEVICES FITTED.

Before leaving the factory this rifle was Q.A. inspected and test fired using Air Arms pellets to check operation and final adjustment.

It was dispatched in a sealed purpose designed box. Air Arms may not be responsible for any damage to the contents or missing items if the box is not original, if it is damaged or the seals are not intact.

Air Arms cannot be held responsible for damage or missing items due to transit damage, mishandling or being tampered with after leaving the factory.

If this rifle is not received in the original box with the seals intact, please examine carefully for any damage, missing tools or documentation.

In the first instance any problems or complaints regarding this product should be referred to the supplier.

The air cylinder is a highly pressurised unit that must not be modified in any way. Serious personal injury may result if this, and the advice below is not followed.

Important Information (Continued)

Do not pressurise the cylinder if there are any surface abrasions or dents. Contact Air Arms for advice.

Do not store the rifle in places with, or near sources of high temperature such as fires or boilers.

Air Arms recommend using a dry pack filter kit on any hand pumps used to fill our air rifles.

If accessories not manufactured by Air Arms are used on this rifle, Air Arms can not be held responsible for any loss of performance or damage to your rifle. Contact your supplier or Air Arms for any advice on this matter.

Do not store this rifle in a damp place such as garden shed or garage.

Do not store this rifle in a plastic or PVC gun bag without first applying a surface corrosion inhibitor.

Always ensure the loading bolt is fully closed before firing.

Do not attempt to dismantle when pressurised.

Do not pressurize beyond the stated filling pressure (see filling instruction section). Damage caused by such action is not covered by the manufacturers warranty.

Only use clean, filtered and dry compressed air. Never use any other gas, particularly industrial or welding gases such as oxygen, carbon dioxide, acetylene, hydrogen, argon, etc.

If compressed air is being used other than from a diving shop, the inside of the cylinder should be inspected for corrosion at least annually. If in doubt contact Air Arms for advice.

In any event the cylinder should be inspected every two years. Air Arms can provide this service at a reasonable cost.

To maintain this rifle in good working order it should be serviced annually by a competent gunsmith, your supplier may be able to provide this service or contact Air Arms.

A reasonable amount of advice will be provided to enable the end user to service their own rifle, however this is at the discretion of Air Arms and may not be given in all cases.

The velocity of this rifle has been set using Air Arms Field pellets. If any other make or type of pellet is to be used the rifle must be re-tested, to ensure the muzzle energy is within the limits determined by current legislation.

Due to the nature of hand pumps and their relative inefficiency in removing moisture from the compressed air, the chances of corrosion damage to the cylinder and other internal components are increased. Therefore the rifle should be regularly serviced and/or checked for any signs of damage by a competent gunsmith.

AIR ARMS RESERVE THE RIGHT TO ALTER THE CONSTRUCTION, APPEARANCE OR PERFORMANCE OF ANY PRODUCT WITHOUT PRIOR NOTIFICATION. ALL ILLUSTRATIONS ARE FOR INFORMATION PURPOSES ONLY AND DO NOT NECESSARILY SHOW THE EXACT MODEL THAT WAS PURCHASED.

CHECKING VELOCITY

1. Use a reliable chronograph to check velocity, (the formula below requires the reading to be in feet per second - FPS)
2. Use fine measurement scales to weigh the pellet, If scales are unavailable the pellet weight may be stated on the pellet container lid or contact the supplier. (The formula requires the weight to be in grains). To convert from grams to grains multiply by 15.432, i.e. 0.69 grams x 15.432 = 10.65 grains.
3. To find the muzzle energy in ft/lbs use the formula $(FPS \times FPS \times Grains) / 450240$, i.e. $(700 \times 700 \times 10.65) = 5218500$ divide by 450240 = 11.59.

CURRENT LEGISLATION LIMITS NON-FAC HOLDERS, IN THE UK, TO AIR RIFLES WITH A MAXIMUM OF 12ft/lbs MUZZLE ENERGY.

WARNING! IT IS A VERY SERIOUS OFFENCE TO BE IN POSSESSION OF AN AIR RIFLE THAT YOU ARE NOT CERTIFICATED FOR. CONVICTION CAN RESULT IN CONFISCATION OF YOUR RIFLE, A HEAVY FINE OR IMPRISONMENT, EVEN A COMBINATION OF ALL THREE.

***** LIMITED LIABILITY WARRANTY *****

UK Customers only.

This product is warranted to the retail customer for 3 years from date of purchase against defects in materials and workmanship and is transferable to any subsequent owner.

Proof of purchase is required to receive warranty repairs, retain your purchase invoice and complete the warranty registration online as soon as possible after purchase. The warranty details must show the dealer/supplier name and address and date of purchase.

What is covered

Replacement parts & labour on a 'back to base' basis, return transportation to the consumer (mainland UK only).

What is not covered

Transportation from the consumer to Air Arms.

Damage caused by misuse, abuse, lack of routine maintenance, transit damage between the dealer/supplier and the consumer or unauthorized disassembly.

Parts subject to normal wear and tear.

Any other consequential cost incurred by the consumer.

Return transportation to consumers outside mainland UK.

No warranty is implied as to the fitness for any particular purpose.

Operating Instructions

Cocking

Hold securely in one hand and with the other pull the cocking lever out and to the rear. At the end of the stroke the magazine will index and present a new chamber, also the trigger mechanism will engage. This can be determined by the trigger blade 'kicking' forward at the end of the cocking stroke.

The effect required to cock the gun is quite low so minimal force should be used.

Note ! It is very important that the cocking lever is pulled back to the correct position. In one positive motion. The magazine indexes to the next pellet position as the bolt is retracted and it is possible for a partial index if the lever is not pulled back fully.



If you find the mechanism has not cocked completely but the magazine has indexed, Re-cock but before closing the bolt, remove the magazine and manually index it back to the empty chamber. Replace the magazine and fire as normal. If this procedure is not followed it is likely that you will load a second pellet into the barrel.

Push the lever back to the forward position. The rifle is now cocked and loaded, treat with caution.

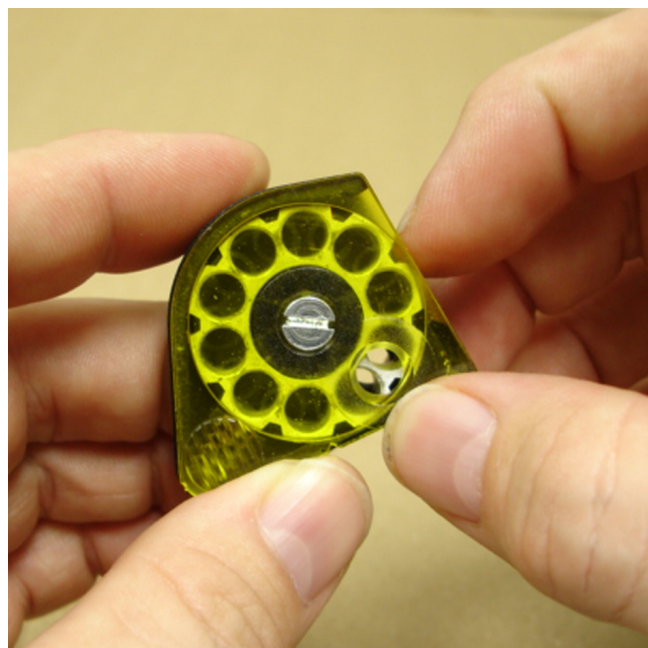
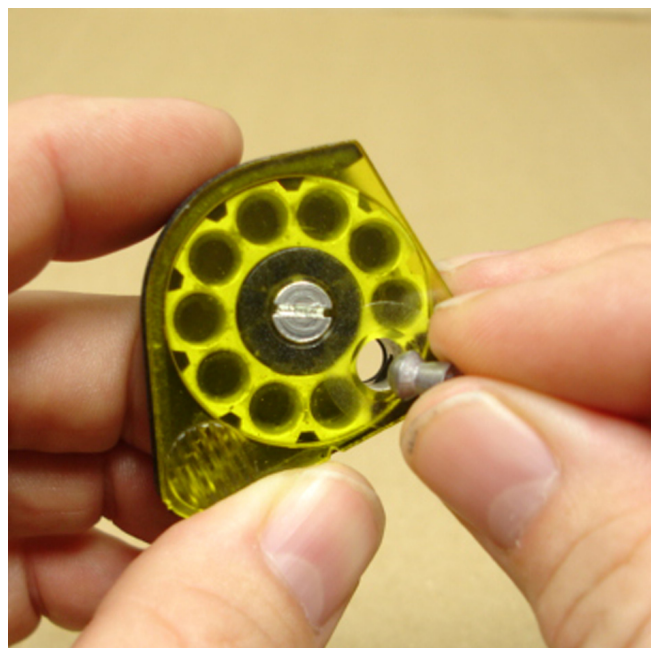
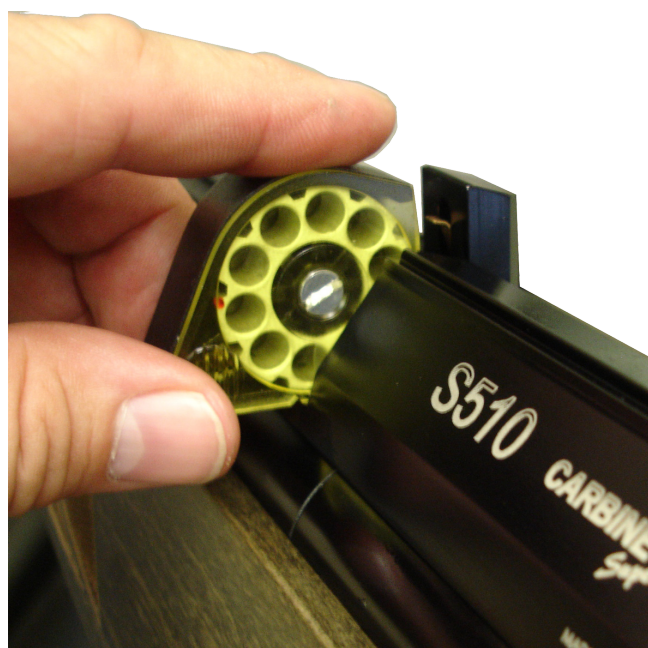
Mounting/Demounting the Magazine & Pellets

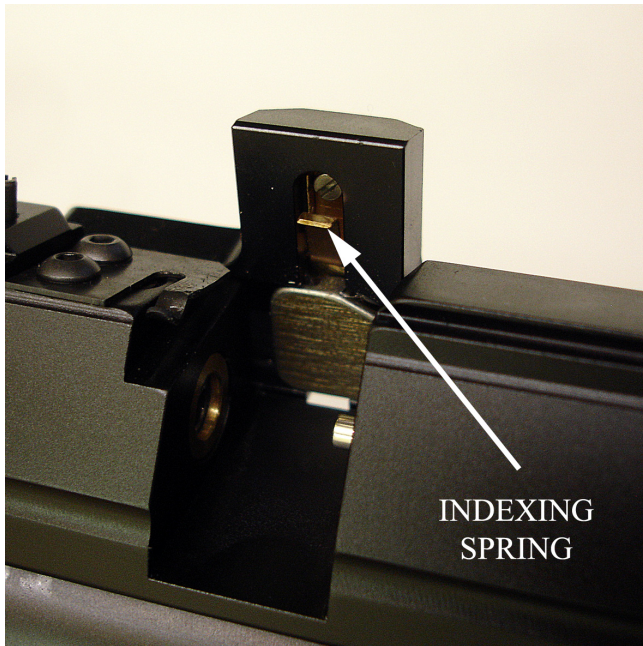
Demounting

Fully cock the rifle, grip the magazine and slide out of the bolt housing without lifting. **Do not** attempt to lift vertically as damage to the indexing spring will result.

To refit the magazine, fully cock the rifle, grip the magazine and slide in the bolt housing applying downward pressure with the fore finger to keep the base of the magazine against the bottom of the slot in the bolt housing. Take care not to damage the indexing spring.

Hold the magazine and drop a pellet into the chamber. Manually index to the next empty chamber and repeat until the magazine is full.





Be very careful not to damage the indexing spring when demounting or mounting the magazine. Follow the instructions carefully.

A small drop of oil should be applied to the magazine 'O' ring to keep it moist, and increase its life span.

Trigger Adjustments

The S510 models all have a two stage unit with adjustment to both stages plus a weight of pull adjustment. It is easy to upset the balance between the two stages and make the trigger inoperable if incorrectly adjusted.

If you have no experience of adjusting two stage triggers seek guidance or leave the trigger as set by the factory.

Note! Incorrectly adjusted trigger mechanisms are not covered by the manufacturers warranty. It is not possible to test this rifle with an incorrectly adjusted trigger, therefore all triggers leave the factory with correct adjustment. **WARNING!** Please note that it is possible to stop the safety button working with incorrect trigger adjustment. AN INCORRECTLY ADJUSTED TRIGGER CAN MAKE THE RIFLE UNSAFE TO HANDLE.

Description Of Operation

The S510 rifles have a true two stage trigger mechanism. This means that as the trigger is pulled the bottom sear gradually disengages with the top sear until the two disengage completely and the rifle goes off. If the pressure on the trigger is released at any point before full disengagement, the bottom sear will automatically return back to full engagement. This type of trigger allows very fine but safe operation because it is the release of the 2nd stage that actually makes the rifle fire. This arrangement is vastly superior to pseudo two stage triggers where the first stage is just a pivoting trigger blade that does not move sears. The down side is that they are more difficult to adjust correctly.

Adjustment

There are three adjuster screws, A-B-C.

The weight of pull adjuster (A) is located in the front of the trigger guard. Clockwise rotation increases pull weight. If adjusted too far the spring will become coil-bound and prevent trigger operation.

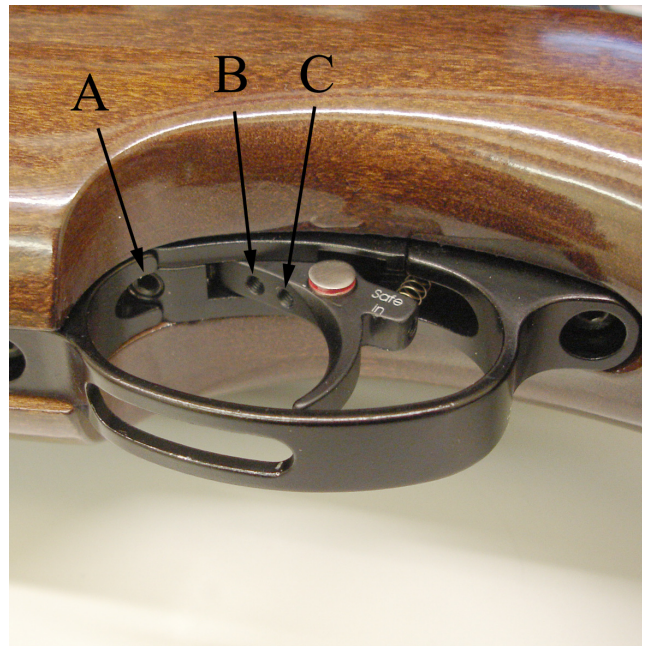
The second stage adjuster (C) is the rear screw located in the trigger blade. This screw determines the exact point that the 2nd stage starts. If the 1st stage screw is incorrectly adjusted this screw may not have any effect.

The first stage adjuster (B) is the front screw located in the trigger blade. This screw determines the length of travel before the 2nd stage starts. Clockwise adjustment reduces the first stage travel.

This rifle is fitted with a manual safety button located in the trigger blade.

To make the rifle safe the button must be pressed until it is flush with the side of the trigger blade.

Please note that it is possible to stop the safety button working with incorrect trigger adjustment.

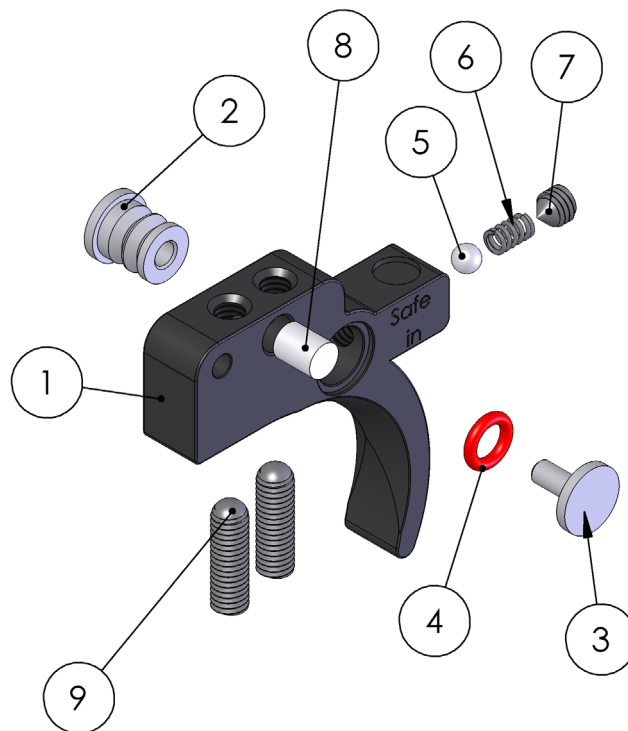


With the button pressed in the rifle is safe.



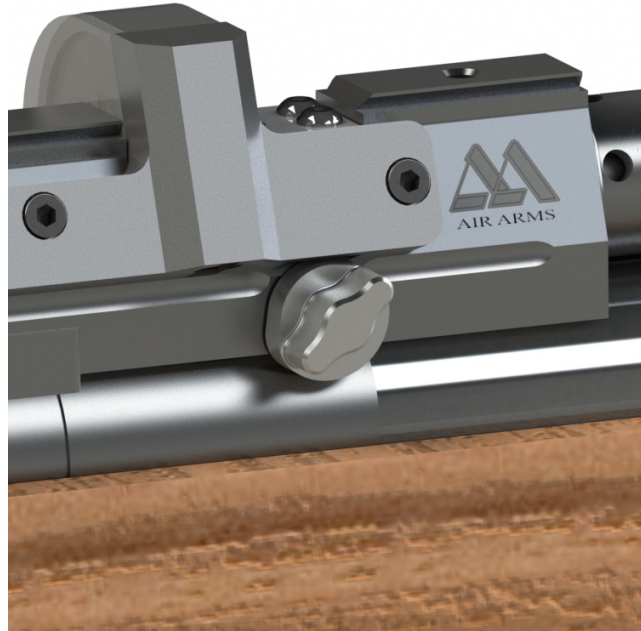
With the button out the rifle is now ready to fire.

ITEM NO.	PART NUMBER	DESCRIPTION	QTY.
1	S420S-2	TRIGGER BLADE - BLACK ANODIZED	1
	S420GS-2	TRIGGER BLADE - GOLD PLATED	
2	S521-2A	SAFETY BUTTON - PART ONE	1
3	S521-2B	SAFETY BUTTON - PART TWO	1
4	S526	SAFETY BUTTON O RING	1
5	S523	BALL BEARING	1
6	S522	SAFETY BUTTON SPRING	1
7	S524	SCREW	1
8	TX432	ADJUSTER SCREW LOCKING PAD	1
9	S421	SCREW	2

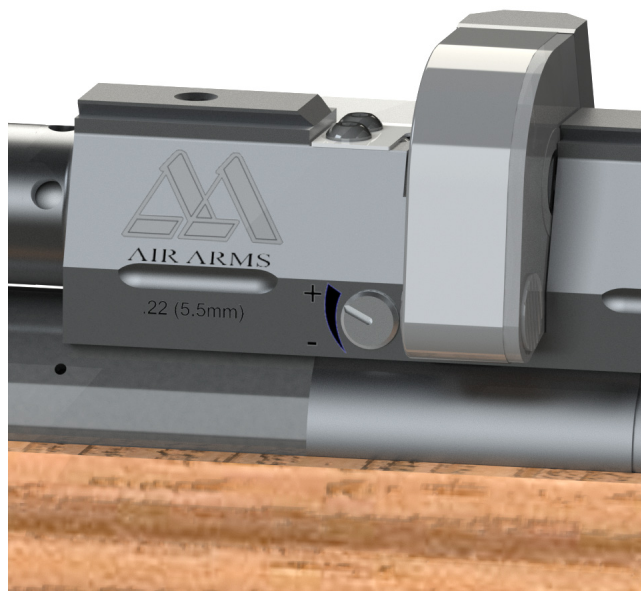


Power Adjuster

The S510 XS is fitted with a power adjuster on the side of the rifle. This can be used to adjust the power at any time by just turning anti-clockwise to increase and clockwise to decrease the power. Adjusting the power between shots will not harm the rifle.



On the left hand side of the rifle is a indicator to help select your most common power settings + = High. - = Low. The marks do not indicate a particular power as this would change depending on the pellets used.



Filling Instructions

NOTE! ONLY USE CLEAN, DRY AND FILTERED COMPRESSED AIR, PREFERABLY FROM A DIVING SHOP. OVER PRESSURIZATION MAY DAMAGE THE CYLINDER BEYOND REPAIR.

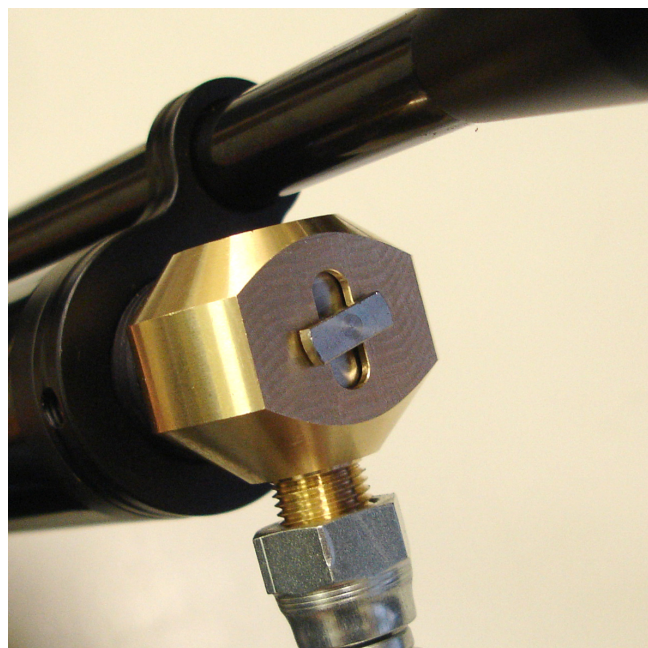
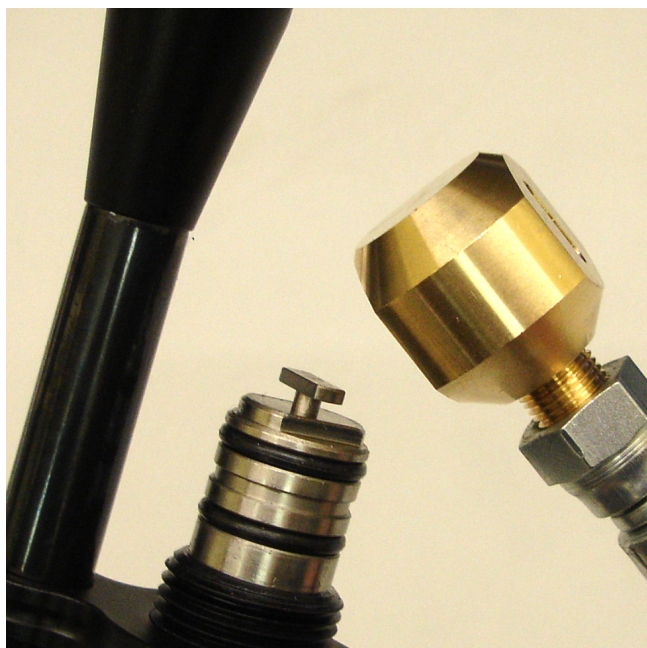
First the female part of the filling kit (this was supplied with the rifle) must be fitted to your filling equipment. The female part (S475) has a 1/8th BSP male thread that screws directly into the hose of your pump or bottle.

Next remove the dust cover from the end of your rifle. This is achieved by unscrewing the cover in an anti-clockwise direction.



Once the connector is exposed the female part of the filling kit can be placed on the male and press all the way on making sure that the 'O' rings on the male part are covered.

It is a wise precaution to hold the female part of the connector, during the filling procedure, as shown in the pictures below. This will ensure the female adaptor is located completely over the male part and prevent any accidental dislodging of the connector before you start to refill the cylinder.



With the female in place the gun can now be filled.

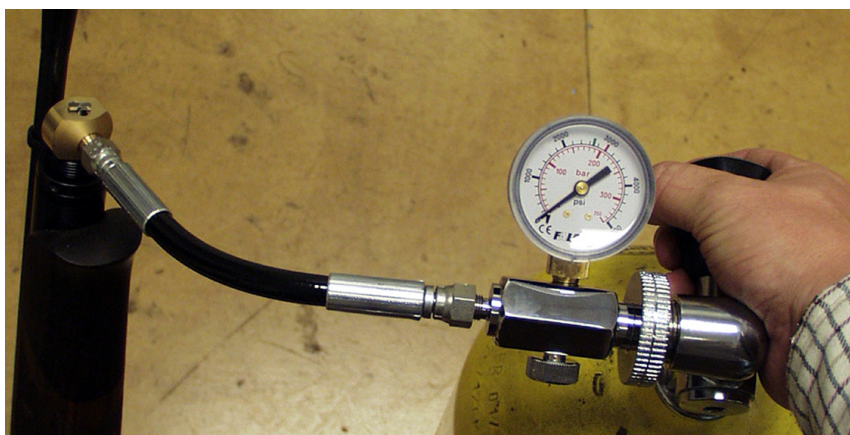
If the rifle is empty the mechanism will need to be cocked to allow the firing valve to close. If the rifle is not cocked when the bottle is opened or the pump used, the air will past the valve and exhaust through the barrel.

Check that the bleed valve on the filling equipment is closed (turn clockwise to close) then slowly open the main valve on bottle or start using the pump. The pressure in the hose will equalise and then the rifle will start to fill.

If you are filling your rifle from empty there may be some air exhausted through the barrel until the air pressure is sufficient to over come the firing valve spring this will happen at approximately 50 bar (750psi).

The filling pressure of the S510 XS is 250 bar (3625psi). Filling to a higher pressure will not increase either power or number of shots. Over filling will lower the power and may cause irreparable damage to the cylinder.

Once the filling pressure has been reached, close the valve on the bottle or stop pumping, open the bleed valve on the filling kit (to vent the hose, if you do not vent the hose you will not be able to remove the female from the rifle). Now the female connector can be removed from the rifle and end cap (E483BK) can be replaced over the male connector ensuring not to overtighten.



The S510 XS range of rifles are fitted with a pressure indicator mounted on the underside of the rifle just in front of the stock screw. This provides the user with a visual check on the amount of air remaining in the cylinder this indicator should not be used during the filling process as the gauge reaction speed has been slowed to prevent damage whilst filling. After filling the gauge can take several seconds to synchronize with the air in the cylinder. The gauge on the next page shows a guns with just over 100 bar of pressure. Although every gun is slightly different the recommended pressure at which to refill the S510 XS is 150 bar. **Always use the gauge on the filling kit.**



NOTE: On the front of the cylinder is an engraved warning reading....

READ MANUAL. MFP 250bar. MSP 250bar. DOM **/**/** **. INSPECT BI-ANNUALLY.

MFP = Maximum Filling Pressure. The pressure is stated.
MSP = Maximum Safe Pressure. The pressure is stated.
DOM = Date of Manufacture. The date is stated.

What pressure to fill to	250 bar - Filling to a greater pressure will not improve performance
When to refill	Once the rifle has reached 150 bar it is time to refill the cylinder

Using Hand Pumps

The procedure for using hand pumps is the same as for bottle. It is more important to turn the female on the gun to lock it in place.

When using the pump it must be remembered that the first few pump are filling the hose and NOT the gun. When the pressure in the hose equalizes to that in the gun, the gun will start to fill.

It can take some effort to fill the gun using a pump and we recommend using the pump to top up instead of filling from empty.

Maintenance

Fixings

Regularly check the tightness of all fixings. However do not be tempted to over tighten as some parts are made from aluminium and stripped threads may result. Stripped threads are not covered by the manufacturers warranty.

Barrel

For ultimate accuracy, clean and re-lube the barrel frequently. It is difficult to advise how often is best for every circumstance, but every 250 shots is not too often if the desire is to keep the barrel in the best possible condition.

The correct materials are very important. Air arms only uses products made by Napier. Listed below is the Napier product and a more generally available alternative. If possible use napier for the best results.

CLEANER:	Napier Power Airgun Oil
OIL:	Napier Power Airgun Oil
PULL-THROUGH PAD:	Napier Rifle Clean
PULL-THROUGH LINE:	Napier Power pull through kit

As a rule cleaners and oils intended for shotguns and small/full-bore weapons are not suitable.

1. Cut a piece of line three times the length of your barrel, fold in half and tie ends together. Remove silencer if fitted. Open loading bolt.
2. Feed un-knotted end down barrel from the muzzle end until folded end protrudes out 50mm.
3. Cut a 100mm length of 'rifle clean' or 100 x 50mm piece of cloth and pass it between the protruding loop. Spray the pad with 'gun cleaner' or white spirit, turn the rifle upside down and pull the line back through the barrel slowly.
4. Repeat steps 2&3 until the pad is clean.
5. Repeat steps 2&3 once more without any cleaner on the pad to dry the barrel.
6. Repeat steps 2&3 once more with the pad sprayed with 'gun oil' or 3 in 1 oil.

IMPORTANT : THE REASON FOR TURNING THE RIFLE UPSIDE DOWN IS TO PREVENT EXCESS CLEANER/OIL FROM PASSING DOWN THE TRANSFER PORT INTO THE FIRING VALVE CHAMBER.

Lubrication

Lubrication of the internal mechanism is not covered in this handbook. This is best performed by a competent gunsmith or the factory and in any case should not be required until the annual service.

Apply a small dab of grease or oil, on the two pivot points shown in the diagram, and work -in by moving the bolt forwards and backwards. Wipe off excessive grease. Preferred grease is 'Napier g95 gun grease' On return from every shooting session, wipe all over the exterior with an oily rag to preserve the surface finish during storage.

A small drop of oil should be applied to the magazine O ring to keep it moist, and increase its life span.



Removing the Stock

It is good practise to remove the action from the stock from time to time to clean and inspect the underside of the action. This is particularly important if the rifle has been used in wet conditions.

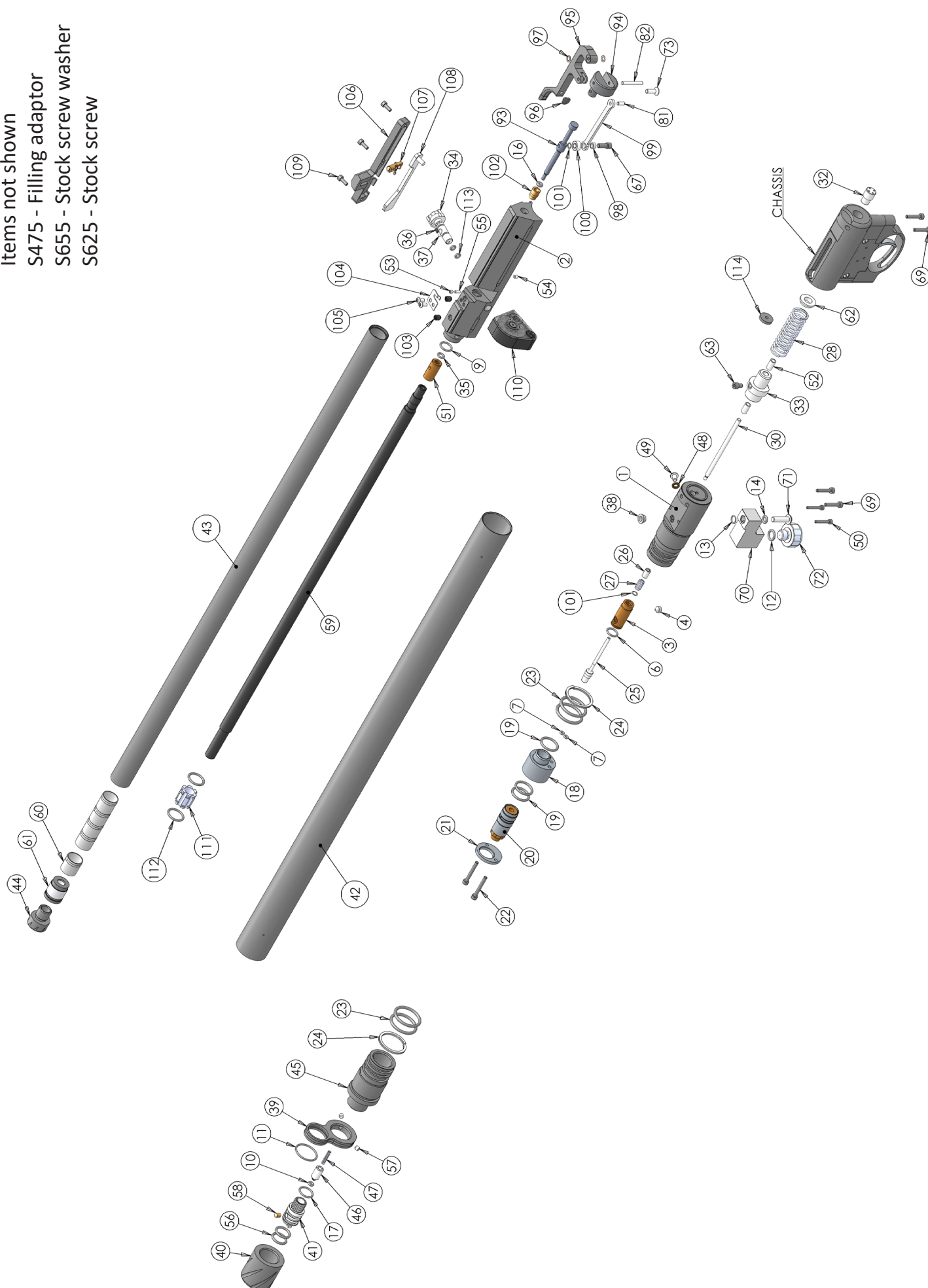
The stock is held to the action using a single screw on the underside between the trigger guard and gauge. Using a 5mm allen key remove the screw and the action will lift free of the stock.

When refitting care must be taken not to over tighten the screw 'hand tight' will be enough to hold the action. Over tightening may force the screw into the wood.

Exploded Diagrams

ITEM NO.	PART NUMBER	DESCRIPTION	QTY	ITEM NO.	PART NUMBER	DESCRIPTION	QTY	ITEM NO.	PART NUMBER	DESCRIPTION	QTY
1	S507-R	FIRING VALVE BODY	1	37	S528	7/64" BALL BEARING	1	70	S640AT	GAUGE MOUNT	1
2	S500H-R	BOLT HOUSING	1	38	S610-HP-R	TRANSFER PORT BUSH HP	1	71	S968	M5 X 16 SKT BTN	1
3	S932-2	VALVE SEAT	1	39	S382H-SL	FRONT CLAMP	1	72	S645	INDICATOR GAUGE	1
4	S934	M6 X 6 SKT SET CONE PT	1	40	E483BK	END CAP	1	73	S322	M4 X 12 CSK SKT	1
6	S966	8 X 1.5 NBR70	1	41	S472	MALE CONNECTOR	1	81	E127	3 X 7.8 ROLLER	1
7	S960	2 X 1.5 NBR90	2	42	S950L-R	CYLINDER - XTRA	1	82	E144	3 X 23.8 ROLLER	1
9	S337	10 X 1.5 NBR 70	1		S950M-R	CYLINDER - CARBINE		94	S130	COCKING ARM PIVOT BLOCK	1
10	S327	BS005 NBR90	1	43	S600H-SL	BARREL TUBE - XTRA	1	95	S125	COCKING ARM	1
11	S484H	20 X 1.5 NBR70	1		S600HC-SL	BARREL TUBE - CARBINE		96	TX227	BUFFER	1
12	RN219-9	BS011 NBR70	1	44	FP134	THREAD PROTECTOR	1	97	E160	M3 CRINKLE WASHER	2
13	S427	6 X 1 NBR70	1	45	S491-R	FIRING VALVE BODY	1	98	S542	SIDE LEVER BUSH	1
14	S536	BS008 NBR70	1	46	S473	FILLING VALVE	1	99	S264	COCKING LINK	1
16	S140	4 X 2 NBR70 (.22 & .25)	1	47	S319	COMPRESSION SPRING	1	100	S541	LOADING BOLT BEARING	1
16	S142	BS102 NBR70 (.177)	1	48	S912	BONDED SEAL	1	101	S541-1	BEARING SHIM	1
17	S484	12 X 1.5 NBR70	1	49	S928	M4 X 6 SKT BTN	1		S501-SL	BOLT HSE BUSH - .22	
18	S936-25	REG HOUSING - CARBINE	1	50	S946	M2.5 X 16 SKT CAP	2	102	S502-SL	BOLT HSE BUSH - .177	1
18	S936	REG HOUSING - XTRA	1	51	S402AH-R	BARREL SEAL HOLDER HP - .22			S504-SL	BOLT HSE BUSH - .25	
19	S342	15 X 2 NBR90	3		S402BH-R	BARREL SEAL HOLDER HP -.177	1	103	RN113	M5 X 6 SKT SET CUP PT	2
20	S962A-150	REGULATOR 150 bar	1	52	E222	BUSH	2	104	S505	MAGAZINE RETAINING CLIP	1
20	S962A-165	REGULATOR 165 bar	1	53	TX239	M3 X 3 SKT SET FT PT	1	105	RN193	M3 X 6 SKT BTN	2
21	S938	REGULATOR RETAINER	1	54	S303	M3 X 3 SKT SET FT PT	1	106	S550-R	SIDE PLATE ADJ HP	1
22	S346	M3 X 50 SKT CAP (.25)	2	55	S517	3/32 x 1/4 DIN6325	1	107	S515A	INDEXING POST ASSY	1
22	S920-7	M3 X 25 SKT CAP (.177 & .22)	4	56	S474	12 X 2 NBR70	2	108	S560	CAM PLATE	1
23	S836	23 X 2.5 NBR90	4	57	TX228	M4 X 4 SKT SET FT PT	2	109	S565	M3 X 8 SKT CAP	3
24	S837	23 X 2.5 BACKUP RING	2	58	S471	SINTERED FILTER	1		S555A	MAGAZINE - .22 (10 SHOT)	
25	S370-2-R	FIRING VALVE	1		S401A-BO	BARREL - XTRA .22			S555B	MAGAZINE - .177 (10 SHOT)	
26	S940	VALVE STEM NUT	1		S401B-BO	BARREL - XTRA .177			S555C	MAGAZINE - .25 (10 SHOT)	2
27	S942	COMPRESSION SPRING	1	59	S401J-BO	BARREL - XTRA .25	1		S554	MAGAZINE - .25 (5 SHOT)	
28	S331	COMPRESSION SPRING	1		S401F-BO	BARREL - CARBINE .22			S557	MAGAZINE - .22 (5 SHOT)	
30	S340-R	GUIDE ROD	1		S401G-BO	BARREL - CARBINE .177			S558	MAGAZINE - .177 (5 SHOT)	
32	S944	GUIDE ROD NUT	1	60	PS224	BAFFLE - XTRA	5	111	S600-3	BARREL TUBE SUPPORT	1
33	S520H-R	STRIKER HP	1			BAFFLE - CARBINE	3	112	RN219-7	BS012 NBR70	2
34	S508-R	POWER ADJUSTER	1	61	S133	SHROUD INSERT	1	113	E880-6	BS0031-16 NBR70	2
35	FP121	BARREL SEAL - .177	1	62	S530	MAIN SPRING GUIDE	1	114	S952	SPRING BAFFLE	1
	S538	BARREL SEAL - .22		63	S356H	M4 X 5 MODIFIED	1				
	FP122	BARREL SEAL - .25		67	S355H-SL	M4 X 12 MODIFIED	1				
36	S522	COMPRESSION SPRING	1	69	RN102A	M3 X 16 SKT CAP	4				

Items not shown
 S475 - Filling adaptor
 S655 - Stock screw washer
 S625 - Stock screw



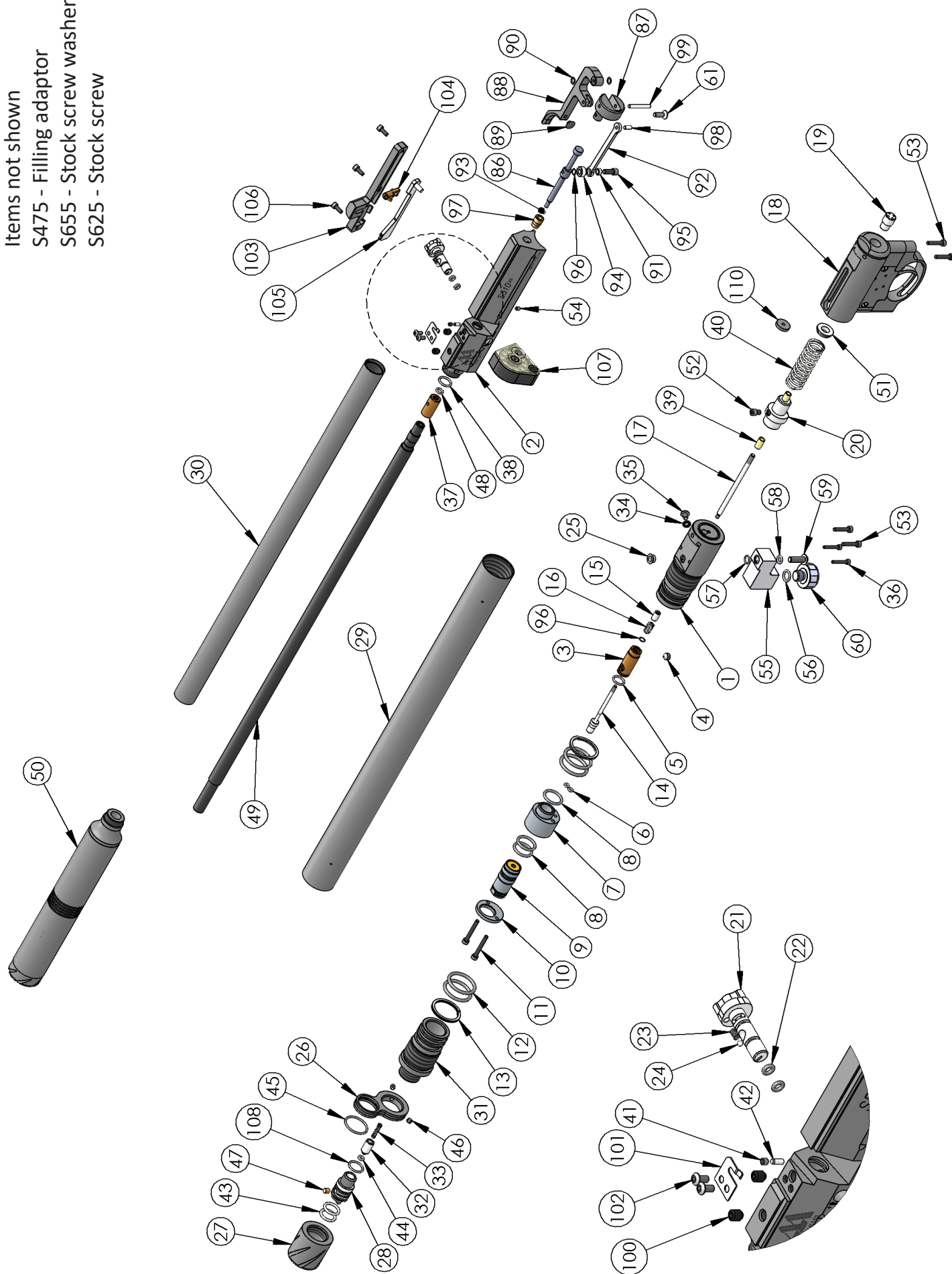
ITEM NO.	PART NUMBER	DESCRIPTION	QTY.	ITEM NO.	PART NUMBER	DESCRIPTION	QTY.	ITEM NO.	PART NUMBER	DESCRIPTION	QTY.
1	S507-R	FIRING VALVE BODY	1	30	S735-EX	BARREL TUBE - US EXPORT	1	60	S645	GAUGE	1
2	S500H-R	BOLT HOUSING HP ADJ	1	31	S491-R	FIRING VALVE BODY	1	61	S322	M4 X 12 CSK SKT	1
3	S932-2	VALVE SEAT TYPE 2	1	32	S473	FILLING VALVE	1	71	S524	M3 X 4 SKT SET CONE PT	1
4	S934	M6 X 6 SKT SET CONE PT	1	33	S319	COMPRESSION SPRING	1	86	S540A-SL	LOADING BOLT STEM - .177	1
5	S966	8 X 1.5 NBR70	1	34	S912	BONDED SEAL	1		S540B-SL	LOADING BOLT STEM - .22	
6	S960	2 X 1.5 NBR90	2	35	S928	M4 X 6 SKT BTN	1	87	S130	COCKING ARM PIVOT BLK	1
7	S936	REGULATOR HOUSING - SMALL	1	36	S946	M2.5 X 16 SKT CAP	2	88	S125	COCKING ARM	1
8	S342	REGULATOR HOUSING - LARGE	3	37	S402AH-R	BARREL SEAL HOLDER .22	1	89	TX227	BUFFER	1
9	S962A-150	150 BAR REGULATOR	1		S402BH-R	BARREL SEAL HOLDER .177		90	E160	M3 CRINKLE WASHER	2
	S962A-165	165 BAR REGULATOR	1	38	S337	10 X 1.5 NBR 70	1	91	S542	SIDE LEVER BUSH	1
10	S938	REGULATOR RETAINER	1	39	E222	BEARING	2	92	S264	COCKING LINK	1
11	S346	M3 X 50 KST CAP	2	40	S331	COMPRESSION SPRING	1	93	S140	LOADING BOLT BUFFER - .22	1
	S920-7	M3 X 25 SKT CAP	4	41	TX239	M3 X 3 SKT SET FT PT	1		S142	LOADING BOLT BUFFER - .177	
12	S836	23 X 2.5 NBR90	4	42	S517	3/32 x 1/4 DIN6325	1	94	S541	LOADING BOLT BEARING	1
13	S837	23 X 2.5 BACKUP RING	2	43	S474	12 X 2 NBR70	2	95	S355H	M4 X 10 STK CAP (MODIFIED)	1
14	S370-2-R	FIRING VALVE TYPE 2	1	44	S327	BS005 NBR90	1	96	S541-1	BEARING SHIM	2
15	S940	VALVE STEM NUT	1	45	S484H	20 X 1.5 NBR70	1	97	S501-SL	BOLT HSE BUSH - .22	1
16	S942	COMPRESSION SPRING	1	46	TX228	M4 X 4 SKT SET FT PT	2		S502-SL	BOLT HSE BUSH .177	
17	S340-R	GUIDE ROD	1	47	S471	SINTERED FILTER	1	98	E127	3 X 7.8 ROLLER	1
18	S310-SL-R	STRIKER BODY	1	48	FP121	BARREL SEAL - .177	1	99	E144	3 X 23.8 ROLLER	1
19	S944	GUIDE ROD NUT	1		S536	BARREL SEAL - .22		100	RN113	M5 X 6 SKT SET CUP PT	2
20	S520H-R	STRIKER HP	1	49	S401A-BO	BARREL - .22	1	101	S505	MAGAZINE RETAINING CLIP	1
21	S508L-R	POWER ADJUSTER - LOCKED	1		S401B-BO	BARREL - .177		102	RN193	M3 X 6 SKT BTN	2
	S508-R	POWER ADJUSTER	1	50	S710-EUS-177	MODERATOR - .177	1	103	S550-R	SIDE PLATE ADJ HP	1
	S508UL-R	POWER ADJUSTER - TAIWAN	1		S710-EUS-22	MODERATOR - .22		104	S515A	INDEXING POST ASSEMBLY	1
22	E880-6	BS0031-16 NBR70	2	51	S530	MAIN SPRING GUIDE	1	105	S560	CAM PLATE	1
23	S522	COMPRESSION SPRING	1	52	S356H	M4 X 5 STK CAP (MODIFIED)	1	106	S565	M3 X 8 SKT CAP	3
24	S528	7/64" BALL BEARING	1	53	RN102A	M3 X 16 SKT CAP	4		S555A	MAGAZINE 10 SHOT - .177	
25	S610-HP-R	TRANSFER PORT BUSH HP	1	54	S303	M3 X 4 SKT SET FT PT	1	107	S555B	MAGAZINE 10 SHOT - .22	2
26	S382H-SL	FRONT CLAMP	1	55	S640AT	GAUGE MOUNT	1		S557	MAGAZINE 5 SHOT - .22	
27	E483BK	END CAP - BLACK	1	56	RN219-9	BS011 NBR70	1		S558	MAGAZINE 5 SHOT - .177	
28	S472	MALE CONNECTOR	1	57	S427	6 X 1 NBR70	1	108	S484	12 X 1.5 NBR70	1
29	S950M-R	CYLINDER MEDIUM	1	58	S536	BS008 NBR70	1	109	TX236	M4 X 16 SKT CAP	1
				59	S968	M5 X 16 SKT BTN	1	110	S952	SPRING BAFFLE	1

Items not shown

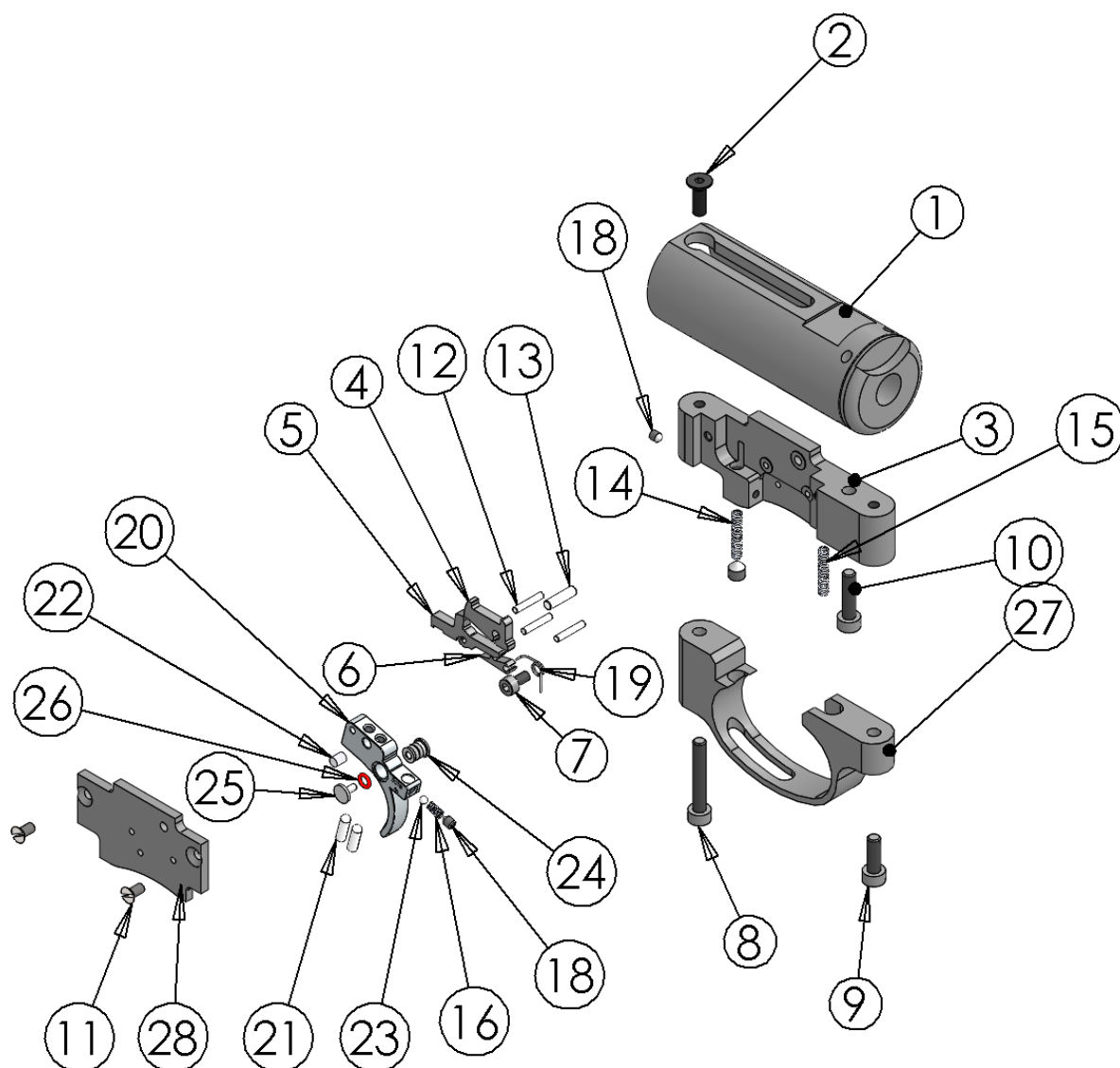
S475 - Filling adaptor

S655 - Stock screw washer

S625 - Stock screw



ITEM NO.	PART NUMBER	DESCRIPTION	QTY.	ITEM NO.	PART NUMBER	DESCRIPTION	QTY.
1	S310-SL-R	STRIKER BODY	1	15	S311	COMPRESSION SPRING	1
2	S322	M4 X 12 CSK SKT	1	16	S522	COMPRESSION SPRING	1
3	S313	TRIGGER CHASSIS	1	17	TX381	M5 X 6 SKT SET CONE PT TUFF LOC	1
4	S320-2	TOP SEAR	1	18	S524	M3 X 4 SKT SET CONE PT	2
5	S325-2	MIDDLE SEAR	1	19	S495	TOP SEAR SPRING	1
6	S321-2	BOTTOM SEAR	1	20	S420S-2	TRIGGER BLADE	1
7	S496	M3 X 6 SKT CAP	1	21	S421	M3 X 10 SKT SET FT PT	2
8	S316	M4 X 25 SKT CAP	1	22	TX432	ADJUSTER SCREW LOCKING PAD	1
9	TX460	M4 X 12 SKT CAP	1	23	S523	3/32" BALL BEARING	1
10	TX236	M4 X 16 SKT CAP	1	24	S521-2A	SAFETY BUTTON - PART ONE	1
11	RN106	M3 X 6 CSK SLOT	2	25	S521-2B	SAFETY BUTTON - PART TWO	1
12	S326	2 X 11.8 ROLLER	3	26	S526	3 X 1 SIR70	1
13	TX398	3 X 11.8 ROLLER	1	27	S314	TRIGGER GUARD	1
14	S319	COMPRESSION SPRING	1	28	S318	COVER PLATE	1



Warranty (UK Only)

The Air Arms warranty covers repairs free of charge if the item is up to 3 years old, from date of purchase (UK only). The warranty covers faulty materials and workmanship, not reasonable wear and tear. The warranty applies to items purchased from new; proof of purchase is required. This cover is not transferable, therefore it applies to the original purchaser only. Please retain your receipt and register the warranty online at: www.air-arms.co.uk/warranty-submission.

What is covered

Replacement parts and labour. Return transportation to the consumer (UK mainland only).

What is not covered

Transportation from the consumer to Air Arms.

Damage caused by misuse, abuse, disassembly or lack of routine maintenance/servicing.

No warranty is implied as to the fitness for any particular purpose. Return transportation to consumers outside the UK mainland. Any rifle with serial number removed or altered.

Please visit www.air-arms.co.uk to register your rifle and details or scan the QR code below.



Air Arms

Unit 5-6, Hailsham Industrial Park,
Diplocks Way, Hailsham,
East Sussex BN27 3JF.

Tel: 01323 845853

Website: www.air-arms.co.uk

Email: general@air-arms.co.uk